

The TeMA logo is displayed in a large, white, sans-serif font. It is positioned over a background image of a city street with a black metal railing and greenery in the foreground, and a building with a red-tiled roof in the background.

TeMA

This Special Issue of TeMA - Journal of Land Use, Mobility and Environment, collects twenty-seven contributes of international researchers and technicians in form of scenarios, insights, reasoning and research on the relations between the City and the impacts of Covid-19 pandemic, questioning about the development of a new vision and a general rethinking of the structure and urban organization.

A photograph of the Milan Cathedral (Duomo di Milano) under a blue sky with scattered white clouds. The cathedral's intricate Gothic architecture, including its many spires and statues, is clearly visible.

Journal of
Land Use, Mobility and Environment

TeMA Journal offers papers with a unified approach to planning, mobility and environmental sustainability. With ANVUR resolution of April 2020, TeMA journal and the articles published from 2016 are included in the A category of scientific journals. From 2015, the articles published on TeMA are included in the Core Collection of Web of Science. It is included in Sparc Europe Seal of Open Access Journals, and the Directory of Open Access Journals.

A photograph of St. Mark's Basilica and its Campanile (bell tower) in Venice. The scene is captured during a rainstorm, with a vibrant rainbow arching over the wet, reflective pavement of the square.

Special Issue

Covid-19 vs City -20

scenarios, insights, reasoning and research

A photograph of a wide, multi-lane bridge over a river, likely the Westminster Bridge in London. The Houses of Parliament and Big Ben are visible in the background across the water. The bridge has speed limit markings on the road surface.

ISSN 1970-9889

University of Naples Federico II

A photograph of Piazza del Plebiscito in Naples, Italy. The square is wet from rain, reflecting the lights of the surrounding buildings and the traffic. The large, classical-style building with a pedimented entrance is prominent in the background.

TeMA

Journal of
Land Use, Mobility and Environment

Special Issue

COVID-19 vs CITY-20

SCENARIOS, INSIGHTS, REASONING AND RESEARCH

Published by

Laboratory of Land Use Mobility and Environment
DICEA - Department of Civil, Architectural and Environmental Engineering
University of Naples "Federico II"

TeMA is realized by CAB - Center for Libraries at "Federico II" University of Naples using Open Journal System

Editor-in-chief: Rocco Papa
print ISSN 1970-9889 | on line ISSN 1970-9870
Licence: Cancelleria del Tribunale di Napoli, n° 6 of 29/01/2008

Editorial correspondence

Laboratory of Land Use Mobility and Environment
DICEA - Department of Civil, Architectural and Environmental Engineering
University of Naples "Federico II"
Piazzale Tecchio, 80
80125 Naples
web: www.tema.unina.it
e-mail: redazione.tema@unina.it

Given the short time to produce the volume, the Editorial Board of TeMA Journal carried out the scientific quality audit of the contributions published in this Special Issue.

The cover image is a photo collage of some cities during the Covid-19 pandemic quarantine (March 2020)

TeMA Journal of Land Use, Mobility and Environment offers researches, applications and contributions with a unified approach to planning and mobility and publishes original inter-disciplinary papers on the interaction of land use, mobility and environment. Domains include: engineering, planning, modeling, behavior, economics, geography, regional science, sociology, architecture and design, network science and complex systems.

With ANVUR resolution of April 2020, TeMA Journal and the articles published from 2016 are included in A category of scientific journals. From 2015, the articles published on TeMA are included in the Core Collection of Web of Science. TeMA Journal has also received the *Sparc Europe Seal* for Open Access Journals released by *Scholarly Publishing and Academic Resources Coalition* (SPARC Europe) and the *Directory of Open Access Journals* (DOAJ). TeMA is published under a Creative Commons Attribution 3.0 License and is blind peer reviewed at least by two referees selected among high-profile scientists. TeMA has been published since 2007 and is indexed in the main bibliographical databases and it is present in the catalogues of hundreds of academic and research libraries worldwide.

EDITOR IN-CHIEF

Rocco Papa, University of Naples Federico II, Italy

EDITORIAL ADVISORY BOARD

Mir Ali, University of Illinois, USA

Luca Bertolini, University of Amsterdam, Netherlands

Luuk Boelens, Ghent University, Belgium

Dino Borri, Polytechnic University of Bari, Italy

Enrique Calderon, Polytechnic University of Madrid, Spain

Roberto Camagni, Polytechnic University of Milan, Italy

Derrick De Kerckhove, University of Toronto, Canada

Mark Deakin, Edinburgh Napier University, Scotland

Aharon Kellerman, University of Haifa, Israel

Nicos Komninos, Aristotle University of Thessaloniki, Greece

David Matthew Levinson, University of Minnesota, USA

Paolo Malanima, Magna Graecia University of Catanzaro, Italy

Agostino Nuzzolo, Tor Vergata University of Rome, Italy

Rocco Papa, University of Naples Federico II, Italy

Serge Salat, Urban Morphology and Complex Systems Institute, France

Mattheos Santamouris, National Kapodistrian University of Athens, Greece

Ali Soltani, Shiraz University, Iran

ASSOCIATE EDITORS

Rosaria Battarra, National Research Council, Institute of Mediterranean studies, Italy

Gerardo Carpentieri, University of Naples Federico II, Italy

Pierluigi Coppola, Politecnico di Milano, Italy

Luigi dell'Olio, University of Cantabria, Spain

Isidoro Fasolino, University of Salerno, Italy

Romano Fistola, University of Sannio, Italy

Carmela Gargiulo, University of Naples Federico II, Italy

Thomas Hartmann, Utrecht University, Netherlands

Markus Hesse, University of Luxemburg, Luxemburg

Seda Kundak, Technical University of Istanbul, Turkey

Rosa Anna La Rocca, University of Naples Federico II, Italy

Houshmand Ebrahimpour Masoumi, Technical University of Berlin, Germany

Giuseppe Mazzeo, National Research Council, Institute of Mediterranean studies, Italy

Nicola Morelli, Aalborg University, Denmark

Enrica Papa, University of Westminster, United Kingdom

Dorina Pojani, University of Queensland, Australia

Floriana Zucaro, University of Naples Federico II, Italy

EDITORIAL STAFF

Gennaro Angiello, Ph.D. at University of Naples Federico II, Italy

Stefano Franco, Ph.D. student at Luiss University Rome, Italy

Federica Gaglione, Ph.D. student at University of Naples Federico II, Italy

Carmen Guida, Ph.D. student at University of Naples Federico II, Italy

Andrea Tulisi, Ph.D. at Second University of Naples, Italy

Special Issue

COVID-19 vs CITY-20

SCENARIOS, INSIGHTS, REASONING AND RESEARCH

Contents

- 5** EDITORIAL PREFACE
Carmela Gargiulo

- 9** Covid-19 and simplification of urban planning tools. The residual plan
Pasqualino Boschetto

- 17** Covid-19. Some moments of the 21st century, with a look at Milan
Roberto Busi

- 31** Geographic Information and Covid-19 outbreak. Does the spatial dimension matter?
Michele Campagna

- 45** Health emergency and economic and territorial implications. First considerations
Salvatore Capasso, Giuseppe Mazzeo

- 59** About the effects of Covid-19 on solid waste management
Alessandra Cesaro, Francesco Pirozzi

- 67** The city and natural resources.
Pandemic disaster can be a driving force for new perspective
Donatella Cialdea

- 81** **Evolution of mobility sector during and beyond Covid-19. Viewpoint of industries, consultancies and public transport companies**
Pierluigi Coppola, Francesco De Fabiis
- 91** **Tourism on demand. A new form of urban and social demand of use after the pandemic event**
Fabio Corbisiero, Rosa Anna La Rocca
- 105** **Questioning urbanisation models in the face of Covid-19.**
The crisis as a window of opportunity for inner areas
Giancarlo Cotella, Elisabetta Vitale Brovarone
- 119** **The Covid-19 pandemic effects in rural areas.**
Turning challenges into opportunities for rural regeneration
Claudia De Luca, Simona Tondelli, Hanna Elisabeth Åberg
- 133** **Shaping space for ever-changing mobility. Covid-19 lesson learned from Milan and its region**
Diego Deponte, Giovanna Fossa, Andrea Gorrini
- 151** **From social distancing to virtual connections**
How the surge of remote working could remold shared spaces
Luisa Errichiello, Daniele Demarco
- 165** **The paradigms of urban planning to emergency-proof.**
Rethinking the organisation of settlements at the time of a pandemic
Isidoro Fasolino, Michele Grimaldi, Francesca Coppola
- 179** **Virucity. Rethinking the urban system**
Romano Fistola, Dino Borri
- 189** **The role of the urban settlement system in the spread of Covid-19 pandemic. The Italian case**
Carmela Gargiulo, Federica Gaglione, Carmen Guida, Rocco Papa, Floriana Zucaro, Gerardo Carpentieri
- 213** ***"Passata è la tempesta ...". A land use planning vision for the Italian Mezzogiorno in the post pandemic***
Paolo La Greca, Francesco Martinico, Fausto Carmelo Nigrelli

- 231 Covid-19 and spatial planning**
A few issues concerning public policy
Sabrina Lai, Federica Leone, Corrado Zoppi
- 247 Take advantage of the black swan to improve the urban environment**
Antonio Leone, Pasquale Balena, Raffaele Pelorosso
- 261 Imagining living spaces in extreme conditions: suggestions from a case study in Bari**
Giulia Mastrodonato, Domenico Camarda
- 269 Risk, health system and urban project**
Gerardo Matteraglia
- 283 Geographical analyses of Covid-19's spreading contagion in the challenge of global health risks**
The role of urban and regional planning for risk containment
Beniamino Murgante, Ginevra Balletto, Giuseppe Borruso, Giuseppe Las Casas, Paolo Castiglia
- 305 The resilient city and adapting to the health emergency.**
Towards sustainable university mobility
Francesca Pirlone, Ilenia Spadaro
- 315 Physical spacing and spatial planning.**
New territorial geographies and renewed urban regeneration policies
Piergiuseppe Pontrandolfi
- 327 Mega cities facing Covid-19 pandemic.**
How to use urban spaces in Tehran after the new pandemic
Elmira Shirgir
- 333 Rethinking rules and social practices. The design of urban spaces in the post-Covid-19 lockdown**
Maria Rosaria Stufano Melone, Stefano Borgo
- 343 Data analysis and mapping for monitoring health risk. What has the spread of the Covid-19 pandemic in northern Italy taught us?**
Michela Tiboni, Michèle Pezzagno, David Vetturi, Craig Alexander, Francesco Botticini
- 363 About the Sustainability of Urban Settlements.**
A first reflection on the correlation between the spread of Covid-19 and the regional average population density in Italy
Maurizio Tira

Take advantage of the black swan to improve the urban environment

Antonio Leone ^a, Pasquale Balena ^b, Raffaele Pelorosso ^{c*}

^a Dipartimento di Ingegneria dell'Innovazione,
Università del Salento, Italy
e-mail: antonio.leone@unisalento.it
ORCID: <https://orcid.org/0000-0002-6314-5878>

^b DICATECh - Department of Civil, Environmental, Land,
Building Engineering and Chemistry
University of Bari, Italy
e-mail: pasquale.balena@poliba.it
ORCID: <https://orcid.org/0000-0002-2599-0122>

^c DAFNE - Department of Agricultural and Forestry
Sciences, University of Tuscia, Viterbo, Italy
e-mail: pelorosso@unitus.it
ORCID: <https://orcid.org/0000-0003-1996-5921>

*Corresponding author

Abstract

The outbreak of the Covid-19 virus for all humanity is a typical example of the birth of the black swan, a metaphor that indicates an unpredictable crisis event, because its very low probability. Statistics and probability theory teach that any deterministic hypothesis of forecasting this type of event is a chimera. More concretely, it is necessary to pay attention to the robustness of the socio-ecosystem, with respect to any crisis advent, not the pursuit of the specific black swan, which, by the way, takes different forms: from financial perfect storms to pandemics, to the unpredictable effects of climate change etc.. The paper refers to the health risk investigating the process of Urban Heat Island (UHI) which is a cause of health risk and of the increase in air pollution hazard. At the moment, there is a debate about the link between air pollution and Covid-19 diffusion, but, in any case, the precautionary principle pushes to take the opportunity of the crisis for a more sustainable city in terms air quality and citizen wellness. This paper presents a simple method to spatially classify areas of the city with different UHI-air pollution hazard, according to their morphology and land use. The possible employment of a such approach for planning has been discussed, to potentially pursue mitigation of the whole supply chain of urban climate-pollution-virus diffusion.

Keywords

Covid-19; Post-lockdown planning; Food self-sufficiency; Mobility; Climate change.

How to cite item in APA format

Leone, A., Balena, P. & Pelorosso, R. (2020). Take advantage of the black swan to improve the urban environment. *Tema. Journal of Land Use, Mobility and Environment*, 247-259.
<https://doi.org/10.6092/1970-9870/6851>

1. Introduction

About half the world's population (over 3 billion people) lives in urban areas, and this number might rise to over 6 billion by 2050. Urban growth will be greatest in Africa and Asia, followed by Latin America and Oceania (Urbanet, 2020). This growth will not only result in more megacities (cities of more than 10 million people, increasingly concentrated in Asia) but also in more medium-sized cities, especially in Africa.

These were the forecasts, before the advent of the black swan, in the form of the pandemic coronavirus Covid-19 (hence forth Covid). The pandemic has undermined the belief of the triumph of the city (Glaeser, 2011) because under the carpet of the splendor of the civilization of encounter and economic development a lot of dust has been accumulated: actually 1 billion people live in slum-like conditions, and, with the world wide population predicted to expand to 9 billion by 2030, this number could reach 2 billion.

In developed countries, on the other hand, cities (above all Italian art cities) have become attractors for relatively affluent people and for tourists (Koolhaas, 2020) which are heavy city negatives, immediately from the social point of view, but also from a robustness point of view, because mono-functional postcard cities are very fragile. In fact, news of these days indicates the budgetary difficulties of Florence, caused by the lack of revenue from tourism. Urban environments can strongly affect human health and their correct planning and management increases systems resilience leading to more robust, reactive and even anti-fragile cities. The coronavirus Covid epidemic is the dramatic signal of overcoming and setting an era: the Enlightenment and mechanistic Modernity (Leone et al., 2018). Following Taleb's (2012) definition of Modernity, it is not the post-medieval historical period, but the era in which mankind predominated over the environment, a definition very close to that of Franco Cardini (2019) according to which the engine of Modernity is the "cancellation of the sense of limit". The consequence is the great fragility of modern systems, for example: megalopolis with suburbs affected by chronic social malaise and always on the brink of social explosion; on the other hand, food safety is threatened by industrial agriculture, dependent on chemistry, genetics and very few varieties of seeds and plant species, which today are even being attempted to patent.

The debate is not new, recalling the criticism of Sassen (2015) who identifies precisely in the global metropolis the place of the emptying of social rights.

This Modernity at the end of the cycle is under the illusion of controlling everything, but, in this way, it accumulates fragility (or entropy, see Leone et al., 2018) with the systematic smoothing of the factors of small stress, which instead have the function of "vaccine" for individuals and society (Taleb, 2012). On the other hand, it is useless to disappoint oneself and large crises and black swans call for a clever solution: the strengthening exercise brought on by smaller crises (precursor signals) and their dynamic function of developing "vaccine" and serendipity. Indeed, we have to learn from smaller crises and mistakes (Taleb, 2012). Consequently, a second Modernity is required to mitigate all the distortions that the last phase of Modernity has introduced. One of these, among the most important in the urban field, is the care for the environment of and in the city, with a new role for the town planning: no longer a project aimed at "magnificent and progressive fates" (e.g. the over sizing of urban plans), but the empathetic effort in understanding and preventing the pathologies of urban living systems (Beck, 2013). This new season, however, is not a complete change of paradigm; on the contrary, its roots are in the origins of Enlightenment town planning, which arose also from the epidemics of the nineteenth century (Astengo, 1970; Benevolo, 1998).

Since change always brings conflicts, opposed by consolidated powers and their "allies" (Leone et al., 2018), such as the pessimism that generates fear of change and laziness. The crisis is an opportunity to overcome these problems by looking at the best tradition of the past.

Hence, rather than thinking about the virus as an architect of the future, it is necessary to use it as a lever to build a better future and, to do this, the environmental protection and management of urban systems is fundamental. The paper discusses the current Covid related environmental issues providing recommendations

for more effective actions that would address the urban planning towards a comprehensive sustainability of future cities. Section 2 presents a brief resume of the links between Covid and urban environmental issue, in particular, air pollution and urban heat island. Section 3, proposes a simple UHI assessment method for an exemplificative case in Bari city, Southern Italy. Finally, section 4 and 5 accounts the outlined discussion and conclusive remarks, respectively.

2. Covid and urban environment

The eruption of the environmental issue in urban planning means resuming, in a contemporary key, the urban hygienist tradition, because protecting the environment also means taking care of health, with the best care there is: the prevention of pathologies, firstly environmental and territorial. In fact, the hygiene requirements of the second Modernity consist above all in environmental care.

Regarding the presence and spread of Covid, it cannot yet be definitively said that air pollution favors the spread of the virus, but more than one scientific paper confirms the high probability of this hypothesis, especially for ammonia and fine-dust pollution. Xiao et al. (2020) investigated whether exposure to fine particulate matter ($PM_{2.5}$) increases the risk of Covid deaths in the United States. The results of this paper suggest that long-term exposure to air pollution increases hazard, i.e. the probability to experiencing the most severe Covid outcomes. These findings align with the known relationship between $PM_{2.5}$ exposure and many of the cardiovascular and respiratory co-morbidities patient (Rydin et al, 2012; Watty et al., 2015). This can be a contributory cause of the dramatically increase of deaths by Covid, because air pollution offers pre-conditions for both the development of respiratory related diseases and the complications and co-morbidities (Murgante et al., 2020). Similar results come from other researches: a position paper from various Italian universities (Setti et al., 2020) shows the strong correlation between the number of infected people and the average of exceeding the PM_{10} limits. The authors attribute this result both to the carrier effect of the atmospheric particulate matter and to its substrate action that keeps the virus in the air viable for a long time. These same authors cite previous studies, therefore more consolidated in the data, relating to avian influenza, in which the number of infected people is related exponentially to the concentrations of fine-dust.

Furthermore, Lu et al. (2019) report a similar situation in the case of a measles epidemic. Further confirmation comes from the recent Becchetti et al. (2020) study, which also assessed the effect of the lockdown in Italy. The study finds a very significant statistical association between pollution, contagions and severity of Covid outcomes, for which the quality of air is a strong predictor of contagion and mortality.

These studies are largely sufficient to demonstrate the importance of the link between air pollution and the risk of contagion, at least on the basis of the precautionary principle.

Furthermore, the “simple” fight against air pollution is already a duty of the town planner, given the numerous diseases that this entails (Rydin et al., 2012; Watty et al., 2015). The role of the planner is very important because planning can prevent or at least minimize the health crisis, through urban design and management, while the doctor is the last bulwark, with the disease arrived.

The analysis carried out in this paper is based on risk assessment, i.e. the careful examination of what, from atmospheric point of view, could cause hazard to people. A hazard is something that can cause harm, while a risk is the chance, high or low, that any hazard will actually cause somebody harm (Tiboni, 2002). In this case, the hazard factor is the urban heat island (UHI), which is a risk for the health of citizens, favors pollution and, likely, is a facilitator of contagion from viruses (Leone, 2019). Consequently, the management of the urban heat island problem becomes a powerful solution tool for all these problems. Furthermore, UHI is itself a pollution factor, because it triggers the chemical reactions that lead to the formation of ozone, one of the main atmospheric pollutants in the city, along with fine dusts and NO_2 . Fig. 1 shows the conceptual scheme adopted in this paper.

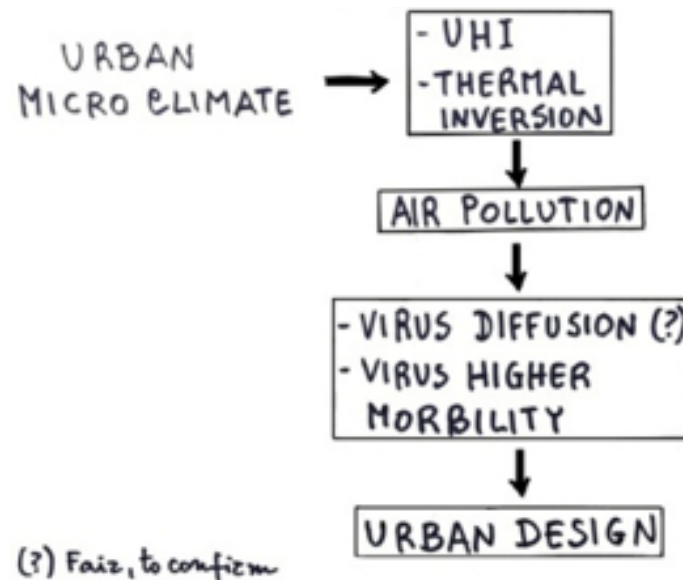


Fig.1 Urban microclimate and hazards.

The Urban Heat Island

The fundamental impact of the city on the atmosphere consists in the phenomenon of the urban heat island, i.e. the significantly higher temperature of the city, compared to the surrounding countryside (Gerundo et al., 2014). This phenomenon influences other processes, such as inversion of vertical thermal profile and even the amount of rainfall during the most intense events, as Zhang et al. (2018) demonstrated in the event of the Harvey hurricane, passing over the city of Houston, Texas.

The UHI is an intrinsic phenomenon of the city, which, especially for built environment materials and geometry, captures the incident solar radiation and retains the anthropogenic heat emitted by vehicles and conditioned buildings, to release it at night (Akbari & Rose, 2001). These processes are very variable, so urban microclimate is highly differentiated and understanding this variability is fundamental for the design and regeneration of the city that is comfortable for its inhabitants, which adapts best to climate change and to the risk of damage to health. UHI is a process that has occurred since long, before the global climate change and has a greater entity, see the example of Paris in Fig. 2: the phenomenon began in the early 1900s, with the great urbanization of the time. Furthermore, the figure shows that UHI is more sensitive to the minimum (night) temperatures.

The size of the city (in terms of inhabitants number, P) is the first trigger factor for a synthetic estimate of the phenomenon, Oke's (1981) model suggests of the maximum UHI ($\Delta T_{(u-r)max}$):

$$\Delta T_{(u-r)max} = 2,01 \times \log_{10} P - 4,06 \quad [^{\circ}C]$$

UHI has two effects on citizens' health: direct, because it alters the conditions of climatic well-being, which is already a mortality factor for weak subjects (Fig.3a); indirect, because it influences atmospheric stability and, therefore, the tendency to accumulate gaseous pollutants and fine dust (Fig.3b, Parry et al., 2012).

As regards air pollution, the following morphological factors of the city are very important:

- size of the urban canyons (Fig.4);
- height and slenderness of the buildings (horizontal section exposed to the wind), which determine the roughness of the urban surface, or its resistance to the motion of the air. The roughness index z_0 is the height at which the vertical profile of the wind extrapolates the speed to zero; it is defined by the following relationship (Erell et al., 2011, modified):

$$z_0 = \frac{H \times a}{2 (A - A_p)} \quad [1]$$

being H (m) the buildings' mean height (m), a (m²) buildings' slenderness, A (m²) the area of the sector examined, A_p (m²) the area occupied by the buildings.

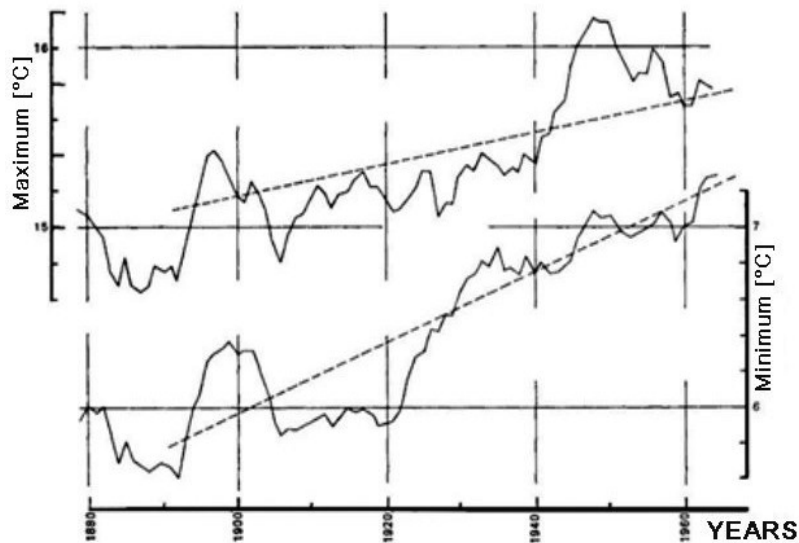


Fig.2 Average annual temperatures in Paris.

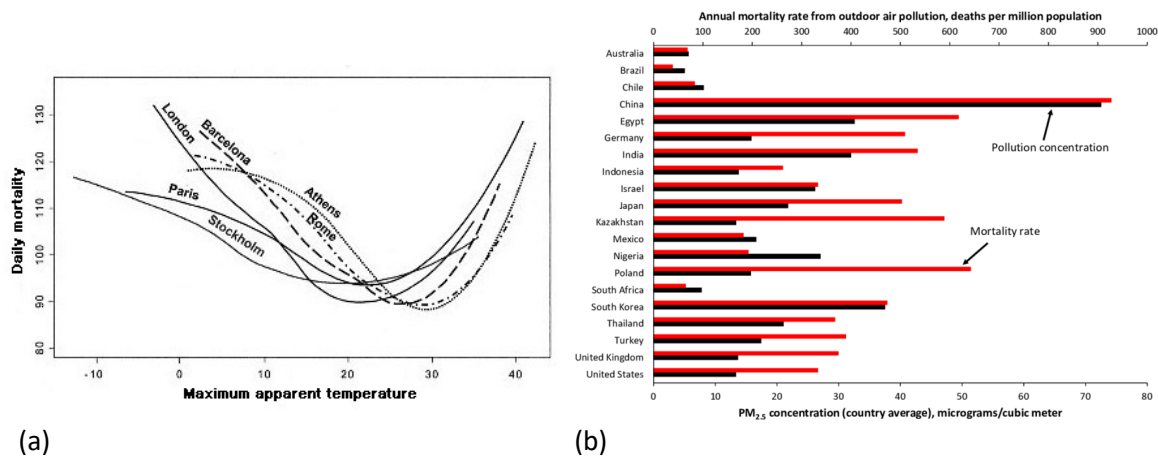


Fig.3 (a) Mortality of weak subjects and thermal comfort (after Bargagli and Michelozzi, 2011); (b) Mortality and PM_{2.5} concentration worldwide (after Parry et al., 2017).

From the point of view of atmospheric vulnerability, urban geometry has a double and synergistic action: i) the roughness z_0 makes the atmosphere more stable, reducing turbulence and wind speed, especially at night, just when the UHI is greater (Fig.5); ii) at night, it is released the energy stored during the day, so the thermal inversion is triggered, being the soil "warmer" and the air above it "colder".

It is well known that thermal inversion is the situation of greatest hazard (i.e. intrinsic vulnerability) of the atmosphere (Leone, 2019). The best indicator of this process is the vertical thermal gradient $\Gamma = \Delta T / \Delta z$ (°C/100 m) which is normally negative, because the temperature decreases with altitude. The more the gradient is negative, the less vulnerable is the atmosphere, because the pollutant particles introduced into the air are pushed upwards and dispersed. On the contrary, if Γ reverses and becomes positive (or close to zero), the vulnerability is maximum (Leone, 2019).

Figure 4 shows a scheme of the urban-rural gradient, with the urban positive gradient due to UHI ($\Delta T_{(u-r)}$), whose quantification can be obtained from the following relationship, coming from the reworking of the data provided by Landsberg (1981):

$$\Gamma = 1,49 \times \Delta T(u-r) - 1,94 \quad [^{\circ}\text{C}/100 \text{ m}]$$

Since a $\Delta T_{(u-r)}=1,3^{\circ}\text{C}$ is sufficient to generate thermal inversion ($\Gamma>0$), this equation shows that almost always the UHI generates a strong vulnerability to pollution of the atmosphere.

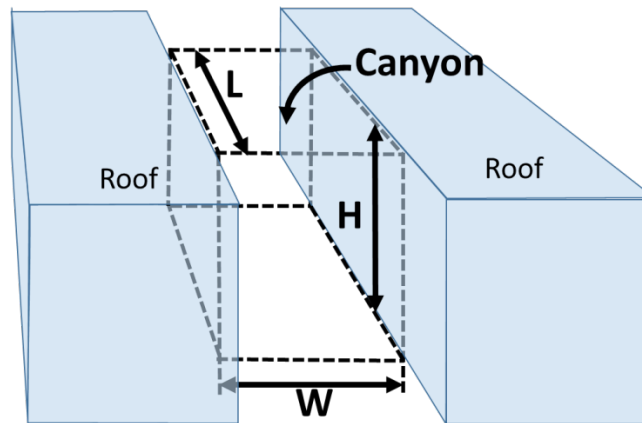


Fig.4 Building morphologies influencing UHI.

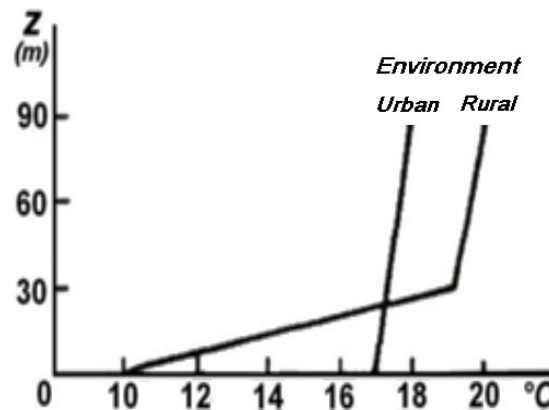


Fig.5 Vertical thermal profiles of urban and rural environments

Urban heat island, city planning and management

In addition to the effect on atmosphere vulnerability, the benefits of reducing UHI include decreasing energy demand and CO₂ emissions, reducing photochemical reactions that produce ozone on the ground. These advantages increase if urban greening is used as a control system of UHI, with all the further advantages that green brings to urban environment and people (i.e. ecosystem services, see Pelorosso et al. 2017a). Therefore, reducing the urban heat island is a fundamental, multifunctional, element of sustainability of the urban project and urban regeneration.

The city is a complex system and its climate is not an exception, as shown by the analysis carried out so far, from which it is observed that the "microclimate in the city" is more important than the "microclimate of the city", because urban different morphologies, physical, geometric and coverage characteristics (buildings materials, vegetation presence, wind exposition etc.) influence all weather-climatic parameters. Interactions and feedbacks among these parameters generate very different micro-zones that it is necessary to identify, to

increase sustainability, in the specific case pursued in terms of urban well-being, less energy consumption and lower emission of climate-altering gases (Alexander et al., 2015).

3. A proposal of UHI assessment

A powerful tool to manage UHI is first of all its quantitative estimate, which can be obtained through the Oke model (1981), which considers the geometry, the more significant process, as it is defined in Figure 3:

$$\Delta T_u - r(max) = 7,45 + 9,14 \times \log_{10}(H/W) \quad [2]$$

This model has been tested with good results for European and North American cities (Oke, 1984; Nakata-Osaki et al., 2018). It is widely used in literature (Roth, 2012; Nakata & Souza, 2013; Chokhachian et al., 2020) because it is based on easily available data and allows an immediate, general urban analysis. In fact, this model allows setting a zoning of the city for different degrees of hazard of the UHI, thanks to the GIS technology. In a second phase, stressed the "hot zones", it is possible a more detailed analysis, to carry the urban design.

An exemplificative application of this analysis is presented in study case, in particular nineteenth-century central district of the Bari city, South Italy. Figure 6 shows the Digital Surface Models (DSM, made by the Puglia region in 2006), coming from the LiDAR system, in which pulses of light travel to the ground allow to evaluate buildings height. The data of Figure 5 has been used to calculate UHI of the streets in the district by equation.

The results of Figure 7 were considered as the first screening on UHI, street by street, from minor to major. Later, a more detailed energy balance of the canyon has been applied to some of these streets, following the approach of the CAT model (Canyon Air Temperature, see Kaplan et al., 2016). In this way, the night UHI was estimated and the results were inserted in the well-being diagram of Olgyay & Olgyay (2015) for some significant days between June 15th to September 15th 2018 (Fig. 8).

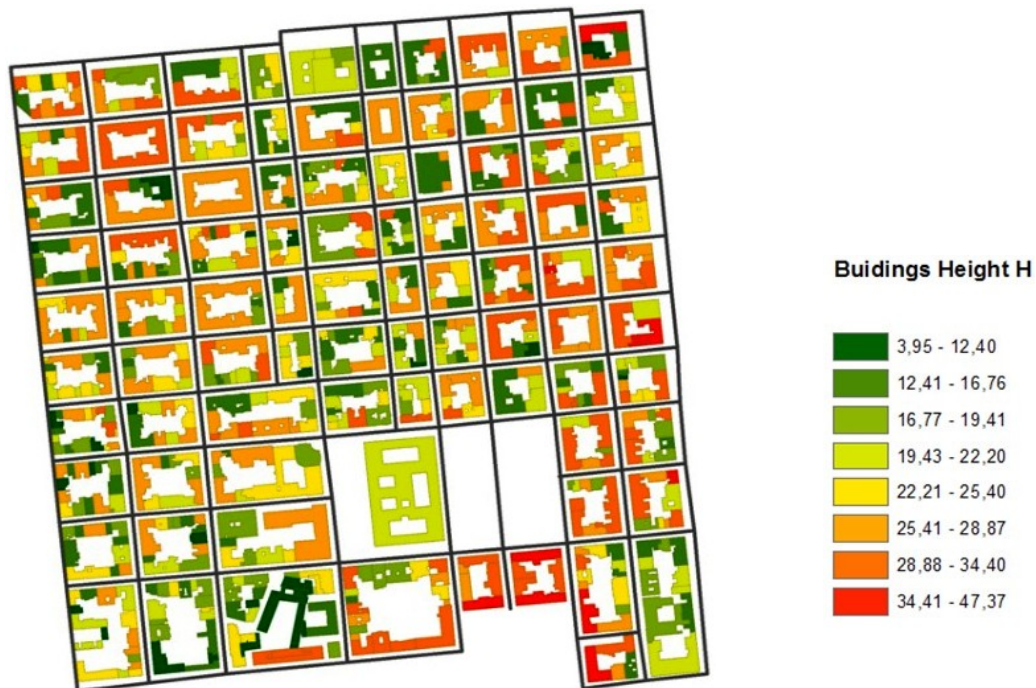


Fig.6 Bari downtown DSM analysis



Fig.7 Downtown UHI distribution following Oke's model

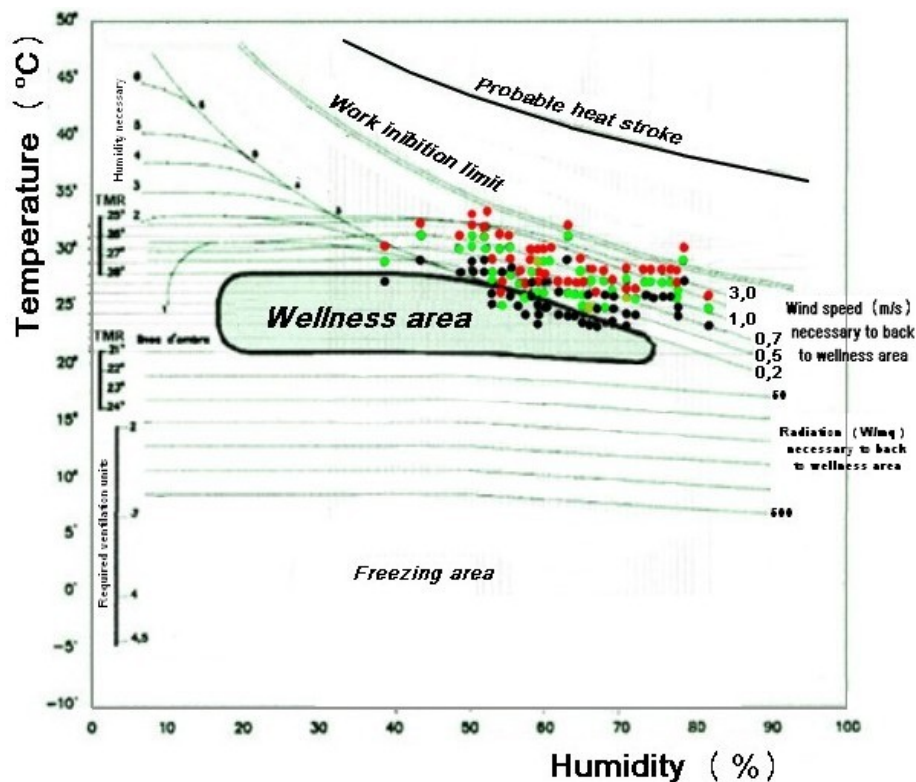


Fig.8 Evaluation of dis-comfort due to nocturnal UHI. The black points refer to the temperature and humidity recorded by the station of Bari, available from the weather archive www.ilmeteo.it; the green points relate to the minimum temperature surplus ("cooler streets"); the red points relate to the maximum temperature surplus ("warmer streets").

4. Discussion

This paper aims to demonstrate how to prevent urban environmental issues related to the health status of citizen; specifically, it regards the UHI phenomenon, whose relevance is evident from Figure 8: for all the investigated period, UHI generates un-sustainable "tropical nights" for the whole period examined. The same

figure shows the importance of the wind, that can be sufficient to bring weather back to the wellness area, but, unfortunately, summer atmospheric calm during the night is frequent and urban geometry itself is a wind attenuation factor, as shown in equation 1.

In consequence, UHI is a relevant issue which will tend to increase the impacts on life quality in future cities. The opportunity to control this process effectively arises from Covid crisis, going in the direction of Taleb's postulate: rather than to chase the unpredictable black swan, it is necessary to improve sustainability, in order to absorb any future crisis.

In the specific case, the prevention of the UHI occurs through the art of designing wellness in the built environment and, furthermore, favoring adaptation to weather and climatic conditions. This aim has been pursued by distinguishing the different parts of the city, according to UHI productions factors, interpreted in a fine grain, street by street, with a sort of "precision urban planning".

The results expressed by Figures 6 and 7 are useful for various urban sustainability strategies. In fact, acting with the aim of reducing the UHI means, too:

- to counteract air pollution and virus spreading morbidity, an action which can, therefore, be an aid to the territorial medicine;
- to set the consequent health plans in case of occurrence of pollution beyond the law limits;
- to adapt the city to climate change also in the immediate term by supporting civil protection plans aimed to prevent the consequences of summer heat waves.

Understanding the hazardous areas forth phenomenon allows setting regeneration, whose outcome can be quantitatively assessed in terms of environmental sustainability and adaptation to climate change. For example, Stewart and Oke (2012) distinguished the local microclimate zones for universally describing neighborhood morphology and thermal climate: each zone is defined on the basis of parameters which impact on the thermal properties, such as green land cover, street canyons geometry, building materials, waste heat management and so forth.

In addition to the care for building materials (reflectance, emissivity, green roofs etc.), there are many other aspects of the sustainable urban project that can be supported by the results shown in Figures 6 and 7. Certainly, the most important outcome consists in the push for the widespread increase of green systems, which are the main mitigation factor of the UHI (Skelhorn et al., 2014).

For these objectives, parks are important, see also Figure 6, where it is evident the role of green areas. But also single and small widespread green areas can play an important role, especially in the compact city, where spaces are limited. For example, scientific literature demonstrates the importance of pocket parks and residual green areas in mitigating the UHI (Lu et al., 2019).

In this latter case, the example of the city of Bari is significant: downtown, practically, have not spaces for green regeneration, but the urban checkerboard structure leaves many spaces between the curtains of the buildings (Figure 5). Historically, these spaces were gardens, which disappeared about 60 years ago, to create warehouses. This tradition can be restored through greening the courtyard (e.g. grass cover and trees) and the technique of green roofs, a component of urban regeneration that can bring microclimatic improvements if opportunely irrigated (Pelorosso et al., 2017b; Pelorosso et al., 2018a; Pelorosso et al., 2018b; Leone et al., 2020).

Furthermore, the quantitative assessment of the UHI can allows Strategic Environmental Assessment (SEA) of regeneration plan to be improved. Indeed, too often the SEA paths neglect the measurable effects of the plan choices (Conticelli & Tondelli, 2013). Finally, spatial indexes of UHI as those proposed in this paper can be employed in innovative performance-based planning approaches based on climate and urban morphological factors (He et al., 2019; Pelorosso, 2020).

The environmental issue and the chain climate change-air pollution-virus diffusion risk is the strategic opportunity to fully address these problems and change the outdated beliefs and paradigms. The metropolis was thought to mean the future of quality, because its essence lies in making available goods, services, flow capacities and relationships, impossible for smaller realities (Glaeser, 2011). It is true, but Covid has showed metropolis' fragility, it is there that the virus has found vitality: in the way of living, moving, consuming and producing. It does not seem a coincidence that Milan's and New York's areas, the most Modernity paradigmatic cities in their respective countries, have been the most affected by Covid that seems to impersonate the barbaric people that attacked the heart of the Empire.

Regarding another Modernity's fragility factor, the global climate change, the online journalist Rob Wijnberg (2020) finds the following four similarities between the Covid pandemic and the climate crisis, considering, in any case, that the climatic emergency is worse than the Covid, because, beyond a certain threshold, it is irreversible and because there is no "vaccine" that allows people to continue living as always:

- the problem is mostly invisible and its invisibility is the problem.
- the problem is global: globalization is "the abolition of distance" and therefore promotes contagion; as well as the world shares a single atmosphere. Hence, concepts like "here" and "there" are misleading;
- the problem affects everyone, everyone can catch the virus, but it also discriminates the weakest people: elderly, people of color, immigrants, low-educated adults, people on lower incomes, people in developing countries, refugees, etc.;
- the climate crisis requires an equally fundamental restructuring of society.

Aiming to problem solving, the authors of this paper add a fifth similarity:

- solution to the above problems often coincide: the presence of open spaces for walking and cycling and the greenery of cities more accessible for the inhabitants are the same recipe, both for adaptation to climate change and for the fight against UHI, air pollution and Covid contagion.

5. Conclusion

Given their unpredictability, to mitigate the effect of black swans, it is necessary the construction of robust systems acting before they present themselves, so that, at that moment, the system can react and perhaps take advantage of the crisis to acquire new resilience.

The weak point in the application of this reasoning consists in the timing, because building robust systems means acting in a non-emergency situation, when the path is more difficult, and people don't believe in change. Politicians and decision-makers, even when sensitive and open to new strategic visions, know that acting in a non-emergency situation is rarely convenient in electoral terms. The advantage of the crisis is an opportunity also because it may give strength to the more advanced visions. Then, the strategy must be twofold: an immediate tactic, to mitigate the specific effects of the black swan, and a wide-ranging one, aimed at increasing new and more advanced balances.

The link between urban climate-pollution-virus diffusion discussed in this paper offers a concrete example in this sense. The positive feedback that connects all these processes makes it an unmissable opportunity for an authentic sustainable and fair city regeneration.

References

Akbari, H. & Rose, L. S. (2001). Characterizing the Fabric of the Urban Environment: A Case Study of Salt Lake City, Utah, U. S. Environmental Protection Agency. Retrieved from <https://www.researchgate.net/publication/241960844>

- Alexander, P.J., Mills, G. & Fealy, R. (2015). Using LCZ data to run an urban energy balance model, *Urban Climate*, 13, 14–37. <https://doi.org/10.1016/j.uclim.2015.05.001>
- Astengo, G. (1970). *Urbanistica*. Firenze: Enciclopedia Universale dell'arte.
- Bargagli A. M., Michelozzi P. (2011). *Clima e salute, come contrastare i rischi immediati e a lungo termine delle ondate di calore*. Roma: Il Pensiero Scientifico Editore.
- Becchetti, L. G., Conzo, P. & Salustri, F. (2020). Understanding the heterogeneity of adverse COVID-19 outcomes: the role of poor quality of air and lockdown decisions. Outbreak, preprint research paper. Retrieved from <https://ssrn.com/abstract=3572548>
- Beck, U. (2013). *La società del rischio. Verso una seconda modernità*. Roma: Carocci editore.
- Benevolo, L. (1998). Le origini dell'urbanistica moderna, Laterza, 1998.
- Cardini, F. (2019). Il capitalismo è la vera minaccia per l'umanità. Intervista a TPI, L'informazione senza giri di parole. Retrieved from <https://www.tpi.it/economia/franco-cardini-capitalismo-minaccia-umanita-20190128239431/>
- Chokhachian, A., Perini, K., Giulini S., & Auer, T. (2020). Urban performance and density: Generative study on interdependencies of urban form and environmental measures, *Sustainable Cities and Society*, 53(101952). <https://doi.org/10.1016/j.scs.2019.101952>
- Conticelli, E. & Tondelli, S. (2013). Application of Strategic Environmental Assessment to Eco-Industrial Parks: Raibano Case in Italy, *Journal of Urban Planning and Development*, 139, 185-196. [https://doi.org/10.1061/\(ASCE\)UP.1943-5444.0000144](https://doi.org/10.1061/(ASCE)UP.1943-5444.0000144)
- Erell, E., Pearlmuter D. & Williamson, T. (2011). *Urban Microclimate. Designing the Spaces Between Buildings*. London: Routledge .
- Gerundo, R., Fasolino, I. Grimaldi, M. Siniscalco, A. (2014). *L'indice di sostenibilità dell'intervento urbanistico*. Collana di Tecnica Urbanistica. Roma: Edizioni Scientifiche Italiane.
- Glaeser E. (2011). *The Triumph of the City*. New York: Penguin Books.
- He, B. J., Ding, L., & Prasad, D. (2019). Enhancing urban ventilation performance through the development of precinct ventilation zones: A case study based on the Greater Sydney, Australia. *Sustainable Cities and Society*, 47, 101472. <https://doi.org/10.1016/j.scs.2019.101472>
- Kaplan S., Peeters, A. & Errel, E. (2016). Predicting air temperature simultaneously for multiple locations in an urban environment: A bottom up approach, *Applied Geography*, 76, 62-74. <https://doi.org/10.1016/j.apgeog.2016.09.015>
- Koolhaas R. (2020). Redesigning Public Spaces Was Necessary Before the Pandemic, Time interview. Retrieved from <https://time.com/5836599/rem-koolhaas-architecture-coronavirus/>
- Landsberg, H.E. (1981). The Urban Climate, *International Geophysics Series*, 28. <https://doi.org/10.1002/qj.49710845719>
- Leone, A., Pelorosso, R. & Gobattoni, F. (2018). *Pianificazione e incertezza. Una bussola e alcune mappe per navigare nel mondo liquido*. Milano: Franco Angeli Editore.
- Leone, A. (2019). *Ambiente e pianificazione. Uso del suolo e processi di sostenibilità*. Milano: Franco Angeli Editore.
- Leone, A., Gobattoni, F., Pelorosso R., Calace, F. (2020). Nature-based climate adaptation for compact cities: green courtyards as urban cool islands, *Plurimondi*, 18, 83-110. <http://dx.doi.org/10.12896/cse20160010086>
- Lin P., Siu, S. Yu Lau, H. Qin, Gou, Z. (2017). Effects of urban planning indicators on urban heat island: a case study of pocket parks in high-rise high-density environment, *Landscape and Urban Planning*, 168, 48–60. <https://doi.org/10.1016/j.landurbplan.2017.09.024>
- Lu P., Xiuge, Z., Yan, T., Shengquan, M., Ju, H., Qinkai, Z. (2019). The effects of air pollution and meteorological factors on measles cases in Lanzhou, China, Environmental Science and Pollution Research, *Environmental Science and Pollution Research*, 27, 13524–13533. <https://doi.org/10.1007/s11356-020-07903-4>
- Murgante. B., Borruso, G., Balleto, G., Castiglia, P. Dettori, M. (2020). Why Italy First? Health, Geographical and Planning aspects of the Covid-19. Outbreak, *Preprints*, 2020050075. <https://doi.org/10.20944/preprints202005.0075.v1>
- Nakata, C. M. & de Souza, L. C. L. (2013). Verification of the Influence of Urban Geometry of the Nocturnal Heat Island Intensity, *Journal of Urban and Environmental Engineering*, 7, (2), 286-292. <https://doi.org/10.4090/juee.2013.v7n2.286292>
- Nakata-Osaki, C. M., Souza, L. C. L. Rodrigués, D. S. (2018). THIS – Tool for Heat Island Simulation: A GIS extension model to calculate urban heat island intensity based on urban geometry, *Computers, Environment and Urban Systems*, 67, 157–168. <https://doi.org/10.1016/j.compenvurbsys.2017.09.007>
- Oke, TR (1981). Canyon geometry and the nocturnal urban heat island: comparison of scale model and field observations, *Journal of Climatology*, 1, 237–254. <https://doi.org/10.1002/joc.3370010304>

Oke, T. R. (1984). Towards a prescription for the greater use of climatic principles in settlement planning, *Energy Building*, 7, 1–10. [https://doi.org/10.1016/0378-7788\(84\)90040-9](https://doi.org/10.1016/0378-7788(84)90040-9)

Olgay V. & Olgay A. (2015). *Design with Climate: Bioclimatic Approach to Architectural Regionalism*. USA: Princeton University Press.

Parry I., Mylonas, V. & Vernon, N. (2017). Reforming Energy Policy in India: Assessing the Options. Retrieved from <https://www.imf.org/en/Publications/WP/Issues/2017/05/03/Reforming-Energy-Policy-in-India-Assessing-the-Options-44853>

Pelorosso, R., Gobattoni, F. & Leone, A. (2017a). Low-Entropy City: A thermodynamic approach to reconnect urban systems with nature, *Landscape and Urban Planning*, 168, 22–30. <https://doi.org/10.1016/j.landurbplan.2017.10.002>

Pelorosso, R., Gobattoni, F. & Leone, A. (2017b). Urban Green Infrastructure, thermal comfort and modelling approaches: the case of Bari courtyards. In: L. Fabian & F. Martinico (Eds.) *For more resilient cities: urban project for energy efficiency and climate change*, pp. 794–801. XIX Italian Urban planners Society Congress, Planum Publisher.

Pelorosso R., F. Gobattoni, F. & Calace, A. Leone (2018a). L'attenuazione dell'isola urbana di calore come opportunità per la rigenerazione urbana. In F. Angelucci (Editor) *Smartness e healthiness for the transition to resilience*, pp. 165–184. Milano: Franco Angeli.

Pelorosso, R., Gobattoni, F. & Leone, A. (2018b). Reducing Urban Entropy Employing Nature-Based Solutions: The Case of Urban StormWater Management. In R. Papa & R. Fistola (Eds.) *Smart Planning: Sustainability and Mobility in the Age of Change*, pp. 37–48. Switzerland: Springer International Publishing.

Pelorosso, R. (2020). Modeling and urban planning: A systematic review of performance-based approaches, *Sustainable Cities and Societies*, 52, 101867. <https://doi.org/10.1016/j.scs.2019.101867>

Roth, M. (2012). Urban Heat Islands. In H.J.S. Fernando (Editor) *Handbook of Environmental Fluid Dynamics Systems, Pollution, Modeling, and Measurements*, 11, pp. 143–159. London: Routledge.

Rydin, Y. et al. (2012). Shaping cities for health: complexity and the planning of urban environments in the 21st century, *The Lancet*, 379(9831), 2079–2108. [https://dx.doi.org/10.1016%2FS0140-6736\(12\)60435-8](https://dx.doi.org/10.1016%2FS0140-6736(12)60435-8)

Sassen, S. (2015). *Espulsioni. Brutalità e complessità nell'economia globale*. Bologna: Il Mulino.

Setti et al. (2020), Relazione circa l'effetto dell'inquinamento da particolato atmosferico e la diffusione di virus nella popolazione, Position Paper, Società Italiana di Medicina Ambientale, Università degli Studi di Bologna, Università degli Studi di Bari, 6 pp.

Setti, L., Passarini, F., de Gennaro G., di Gilio, A., Palmisani, J., & Buono, P. (2020). *Relazione circa l'effetto dell'inquinamento da particolato atmosferico e la diffusione di virus nella popolazione*. Position Paper. Retrieved from https://www.simaonlus.it/wpsima/wp-content/uploads/2020/03/COVID19_Position-Paper_Relazione-circa-l%E2%80%99effetto-dell%E2%80%99inquinamento-da-particolato-atmosferico-e-la-diffusione-di-virus-nella-popolazione.pdf

Skelhorn, C., Lindley, S. & Levermore, G. (2014). The impact of vegetation types on air and surface temperatures in a temperate city: A fine scale assessment in Manchester, UK, *Landscape and Urban Planning*, 121, 129–140. <https://doi.org/10.1016/j.landurbplan.2013.09.012>

Stewart, I. & Oke, T. (2012). Thermal Differentiation of Local Climate Zones Using Temperature Observations from Urban and Rural Field Sites. In *Ninth symposium on urban environment*, Keystone, Colorado, 2–6. Retrieved from <https://ams.confex.com/ams/pdfpapers/173127.pdf>

Taleb, N. N. (2012). *Antifragile. Prospering Into Disorder*. New York: Random House.

Tiboni, M. (2002). La prospettiva dello sviluppo sostenibile. Pianificare per la sicurezza la città e il territorio. Thesis dissertation. Retrieved from https://opac.biblio.polimi.it/sebina/repository/link/oggetti_digitali/fullfiles/PERL-TDDE/TESI_2000-098.PDF

Urbanet, (2020). <https://www.urbanet.info/world-urban-population/>.

Watts, N. et al. (2015). Health and climate change: Policy responses to protect public health, *The Lancet*, 386(10006), 1861–1914. [https://doi.org/10.1016/S0140-6736\(15\)60854-6](https://doi.org/10.1016/S0140-6736(15)60854-6)

Wijnberg, R. (2020). Why climate change is a pandemic in slow motion (and what that can teach us). Retrieved from <https://thecorrespondent.com/449/why-climate-change-is-a-pandemic-in-slow-motion-and-what-that-can-teach-us/10477915635-ffbde9b>.

Xiao, W., Nethery, R. C., Sabath, M. B., Braun, D., Dominici, F. (2020). Exposure to air pollution and COVID-19 mortality in the United States, *Preprints*. <https://doi.org/10.1101/2020.04.05.20054502>.

Zhang, W., Villarini, G., Vecchi, G., Smith, J. (2018). Urbanization exacerbated the rainfall and flooding caused by hurricane Harvey in Houston, *Nature*, 563, 384–388. <https://doi.org/10.1038/s41586-018-0676-z>.

Web sites

ilmeteo.it archive (2018). <https://www.ilmeteo.it/portale/archivio-meteo/Bari/>.

Image Sources

Fig.1: Elaboration by authors;

Fig.2: Landsberg, 1981;

Fig.3a: Bargagli & Michelozzi, 2011;

Fig.3b: Parry et al., 2017;

Fig.4: Elaboration by authors;

Fig.5: Elaboration by authors;

Fig.6: Elaboration by authors;

Fig.7: Elaboration by authors;

Fig.8: Elaboration by authors.

Authors' profiles

Antonio Leone

Degree in Civil Engineering. Full professor of Planning and Environmental Evaluation at the University of Salento, School of Civil Engineering. Member of the PhD Teaching College "Environment and landscape design and planning" at Sapienza University of Rome. Participant and responsible in several projects financed by the European Union within 5th and 7th Framework Programme, Interreg Research Program, COST-actions, LIFE programme and applied research programs (e.g. plans of Parks and Nature 2000 Sites). Member of Scientific International Committee for Metropolitan Strategic Master Plan "Terra di Bari" and AI SMART project Interreg Greece-Italy. Author of over 180 papers and scientific articles on the main international journals related to the environment and landscape management and planning, for the most part of which he also carries out the activity of an anonymous reviewer.

Pasquale Balena

PhD and technician in charge of the Urban Planning Laboratory of the Department DICATECh of Polytechnic of Bari where he carries out his research work on land use planning and remote sensing.

Raffaele Pelorosso

Qualified as Associate Professor by National Scientific Qualification, in Urban and landscape planning and design (Disciplinary Sector 08/F1). Dr. Pelorosso has held several Lectures in ecology, cartography, environmental and urban planning at the Tuscia University. Main research interests: urban storm water management and climate regulation by NBS; Low-Entropy Cities; planning of energy systems; landscape perception assessment and participatory planning; landscape dynamics assessment by historical maps and remote sensing data; management of abandoned; impact of agriculture on the water resources; urban green infrastructure connectivity. He is authors of more than 90 scientific works and peer reviewer for many international journals as: Land Use Policy, Landscape and Urban Planning, Environmental Management, European Planning studies, Habitat international, Sustainability.